

ArtFields in Lake City, SC, Features Works by Kristi Ryba

ArtFields in Lake City, SC, will present the *Chapel Of Perpetual Adoration*, featuring an installation by Kristi Ryba, on view in the Lake City Library Community Center, from Apr. 20 - 28, 2018.

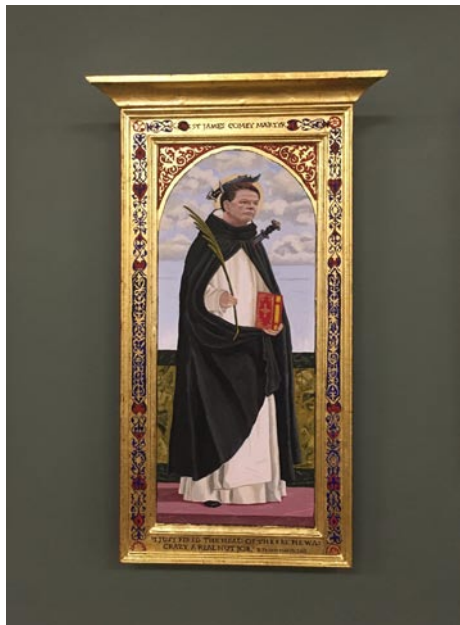
This installation will be the first opportunity for the public to see this satirical work about the Trump White House and our current government.



An installation by Kristi Ryba

Ryba's work is based on original Medieval and Renaissance altarpieces and manuscripts. Since the 2016 election she saw parallels in these original works with our current President and political situation. It was a natural progression to combine current news, commentary and especially "tweets" with the religious and political content of these historical images from early Western European royalty and religion. All the gold, elaborate surroundings and messages of morality and ethics corresponded with what was happening in our government; the gutting of our social safety net and health care, eliminating environmental protections, the lack of restraint in spending money on personal enrichment and the build up of military spending and lack of international diplomacy to name a few.

Ryba has used the iconography of Medieval and Renaissance work in her earlier work about her family and woman's work. She uses 22k gold leaf and egg tempera, (grinding her own pigments), on wooden panels to make this work. In the *Chapel Of Perpetual Adoration*, a mock up of a prayer chapel, she attempts to expose some of the abuses, failings and deficiencies of what is happening in our government. Wikipedia describes "satire as a genre of literature and sometimes graphic and performing arts, in which vices, follies, abuses and shortcomings are held up to ridicule, ideally with the intent of shaming individuals, corporations, government or society itself into improvement. Although satire is usually meant to



Work by Kristi Ryba

be humorous, its greater purpose is often constructive social criticism, using wit to draw attention to both particular and wider issues in society."

Ryba has degrees from Vermont College, Montpelier, VT, MFA, and the College of Charleston, BA, Magna Cum Laude. She has been a professional artist for 30 years, exhibiting throughout the United States. This project was funded in part by the City of Charleston Office of Cultural Affairs and the City of North Charleston Cultural Arts Program and the South Carolina Arts Commission which receives support from the National endowment for the Arts and the John and Susan Bennet Memorial Arts Fund of the Coastal Community Foundation of SC.



Works by Kristi Ryba

In order for visitors to vote for artists in the 2018 ArtFields Competition you must register at 133-A East Main Street, Lake City, SC. Kristi Ryba's ID# is 797936.

For further information about Kristi Ryba her website is (www.kristiryba.com). For more information about ArtFields 2018 please go to (www.artfieldssc.org).

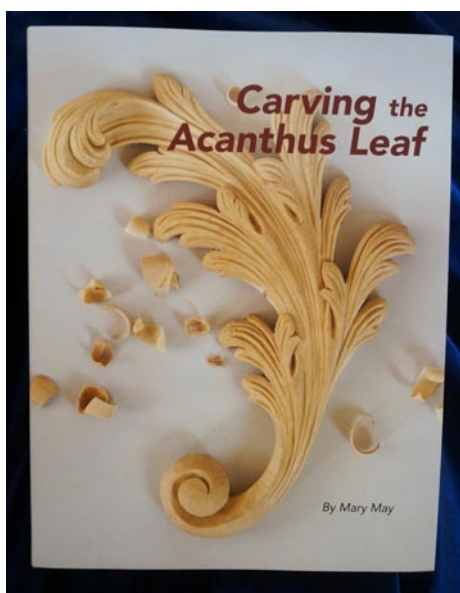
Carving the Acanthus Leaf a How To Book by Mary May

European trained classical woodcarver, Mary May, has completed her first book *Carving the Acanthus Leaf*. May has had the honor of studying with various master European woodcarvers to learn the classical styles of woodcarving and ornamentation. She has written a highly detailed book on how to draw and carve this classical design that has been part of architecture and ornament since ancient times.

For woodworkers focused on classical Western ornament, there comes a time they will inevitably encounter the acanthus leaf, learn it, master it and incorporate it into their own designs.

The long history of the acanthus leaf in decorative arts and architecture can be traced to ancient Greece. It was embraced by the Roman Empire, passed through the Byzantine Empire and the Middle Ages, and was rediscovered during the Renaissance and Baroque periods. It has remained the most commonly carved decorative element throughout history.

Students of classical, Western ornament will discover that learning to design, shape and incorporate this motif into their designs is a true rite of passage. Whether you're a professional woodworker, architect, hobbyist, designer or one simply captivated by classical design and ornamentation, there is much to discover about this mysterious and enduring leaf.



Book Cover

With its first appearance being the multiple curling leaves on the Corinthian capital, this magnificent design has changed

continued on Page 11



"Gloucester Scene" 12"x16" Acrylic on Canvas

Karen Burnette Garner
~Artist~

Quality Artwork for Discerning Collectors
Commissions Available
Join us on Facebook and Instagram

Shop online at
www.karenburnettegarner.com
678.602.7666

Corrigan Gallery in Charleston, SC, Features Works by Paul Mardikian and John Moore

Corrigan Gallery in Charleston, SC, will present *Dialogues Improvisés*, featuring a collaborative show between painter Paul Mardikian and photographer John Moore, on view from Apr. 6 - 30, 2018. A reception will be held on Apr. 6, from 5-8pm.

John Moore has spent decades documenting the color to be found in decay, neglect, the odd repair and the world around us. As he says, he provides us with a rectangle of "the close at hand ... (which can be) more interesting than the whole. Small pictures can become large worlds when you are looking through the view finder of a camera."

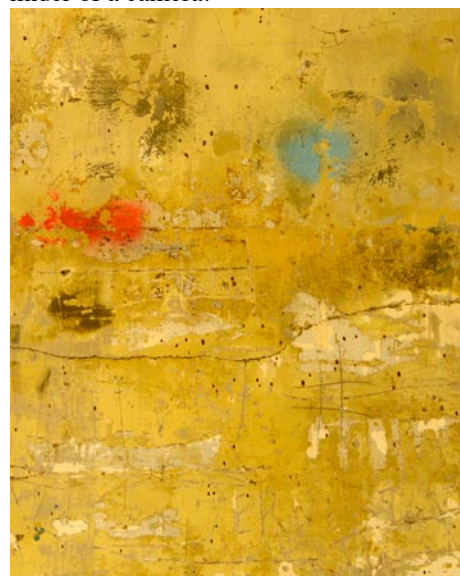


Work by Paul Mardikian

Piccolo Spoleto Juried Exhibits here in Charleston and the *Sierra Club Nature Photography* exhibits. Moore has had several solo shows at the Charleston County Library and participated in many group exhibitions. He was a charter member of the South Carolina Photographers' Guild in 1990. Also, that year the South Carolina Joint Legislative Committee on Cultural Affairs and the South Carolina Arts Federation chose one of Moore's images to be given as the award for South Carolina Business and the Arts Partnership Awards.

Paul Mardikian came to Charleston in his capacity as a conservator to restore the Hunley. He began painting during his studies at the Sorbonne and Louvre long before his arrival in Charleston. The process of removing the layers nature has deposited on his "patients" inspired him to put down layers on board or canvas then remove parts creating a painting or sculpture as he prefers. His work is included in

continued on Page 12



Work by John Moore

He is a structural engineer by profession with photography as his serious avocation and passion for more than 40 years. Since 1984 Moore's photographs have been winning awards and appeared in many juried exhibits, including several *Southern Visions* exhibits at The Museum of York County in Rock Hill, SC, several